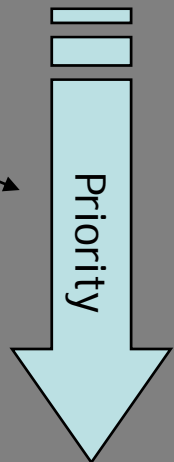
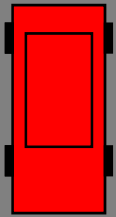
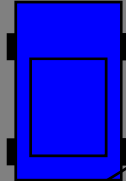


# Meeting Traffic

# Priority

The car coming towards you has priority because you would have to cross onto his side of the road to pass the parked car

As soon as a car is seen, check centre mirror and slow down

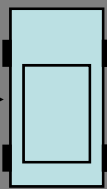


This would be the worst place to pass



When meeting Traffic **ALWAYS** pass at the widest point, never the narrowest

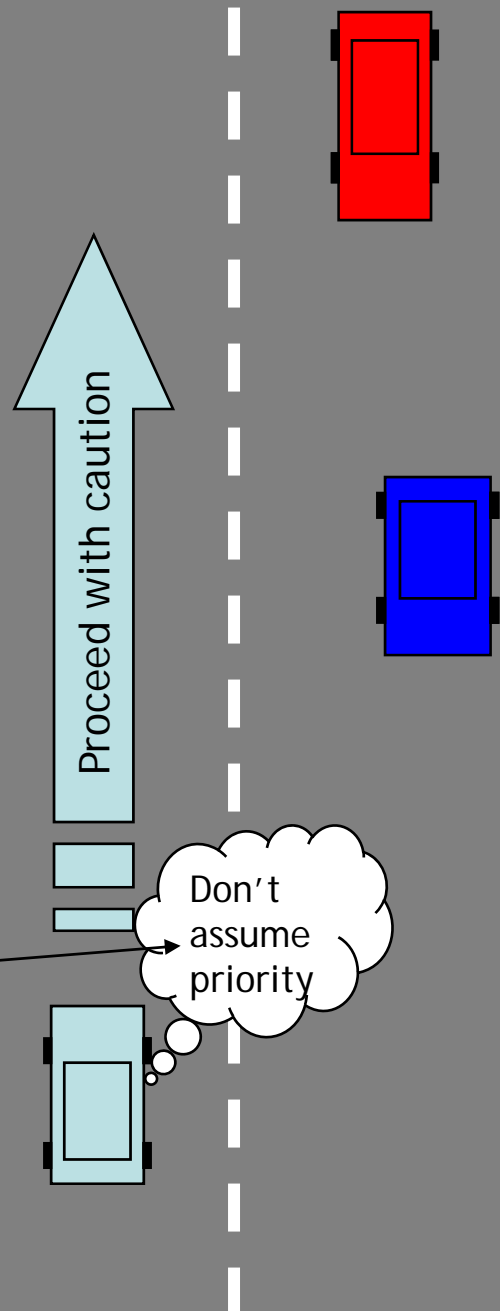
Your car



# Positioning

# Observations

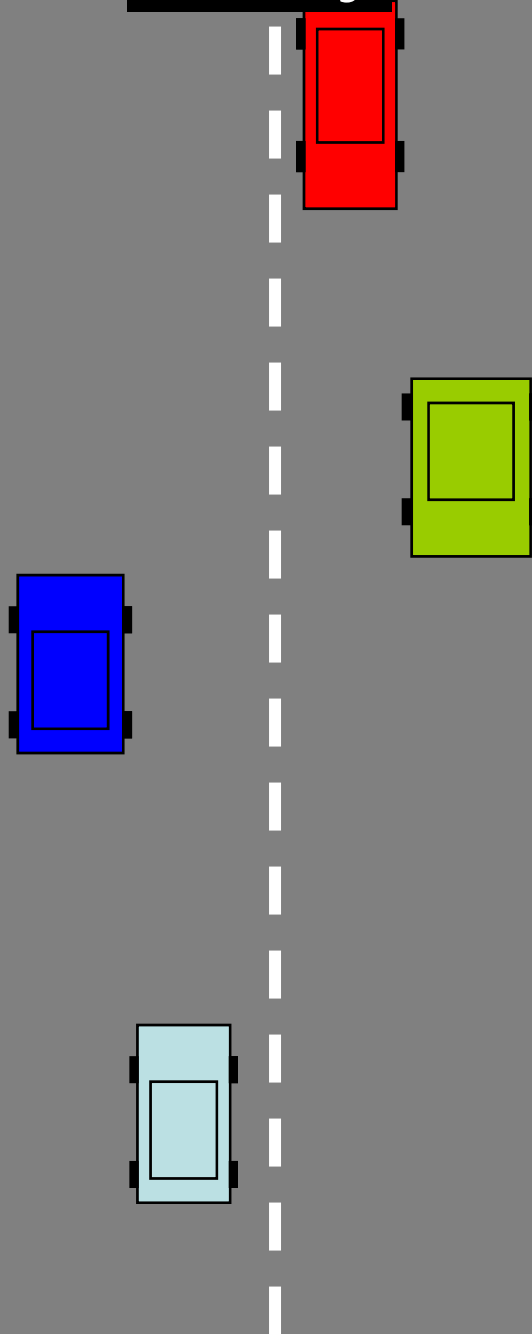
They may not be courteous. Look at their position, are they holding back for you?



What's behind you?



# Priority

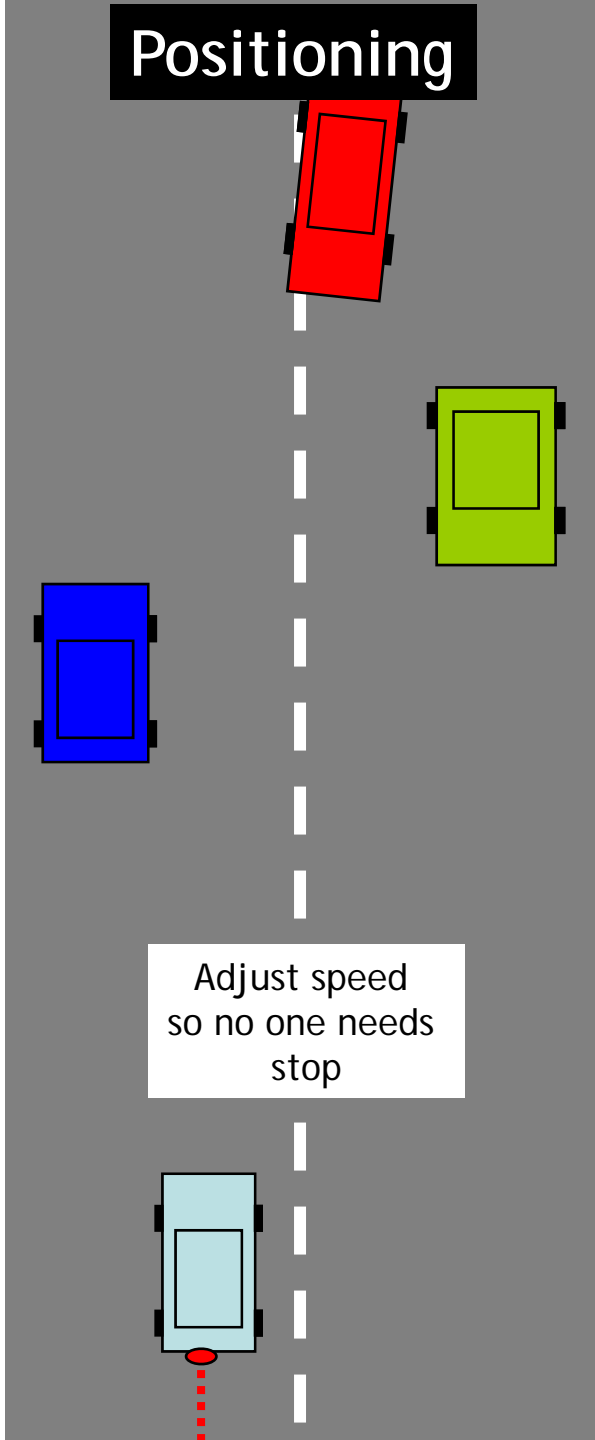


No one has priority

Usual rule is who gets there first but it's not a race

If in doubt  
**HOLD BACK**

# Positioning



Adjust speed  
so no one needs  
stop

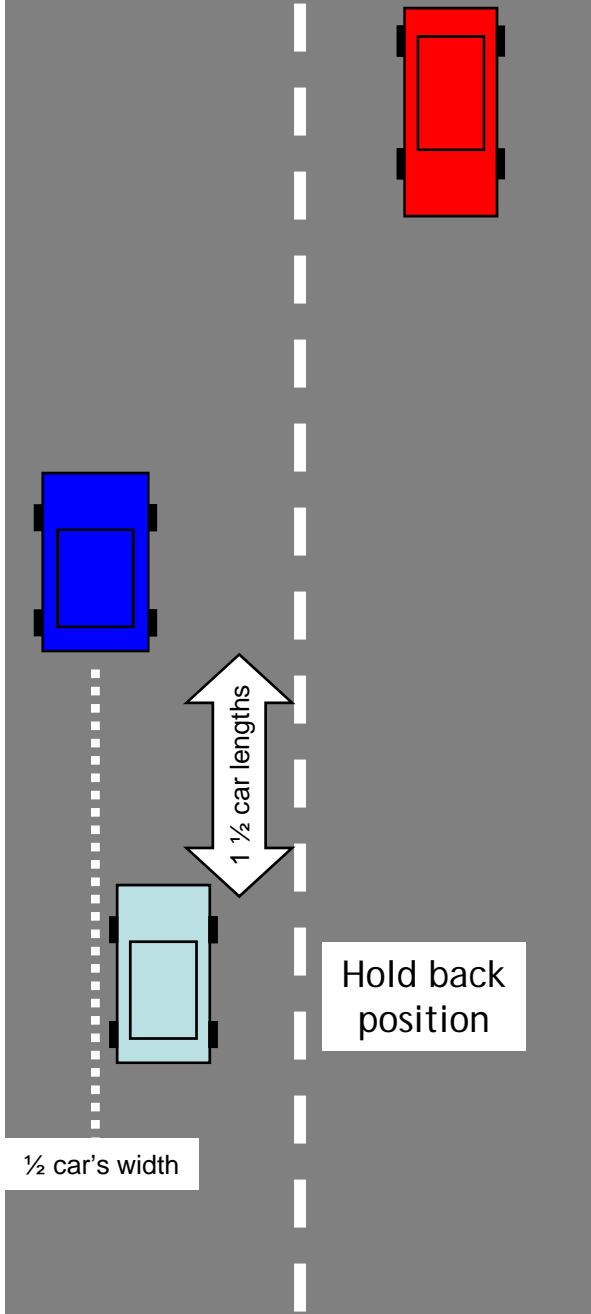
# Observations

What's behind you?

A light blue rounded rectangle with a black outline, positioned below the text 'What's behind you?'. A small black horizontal bar is centered below the bottom edge of the rectangle.

# Positioning

# Observations

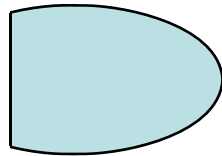


## To move out

What's behind you?



Is anyone overtaking you?

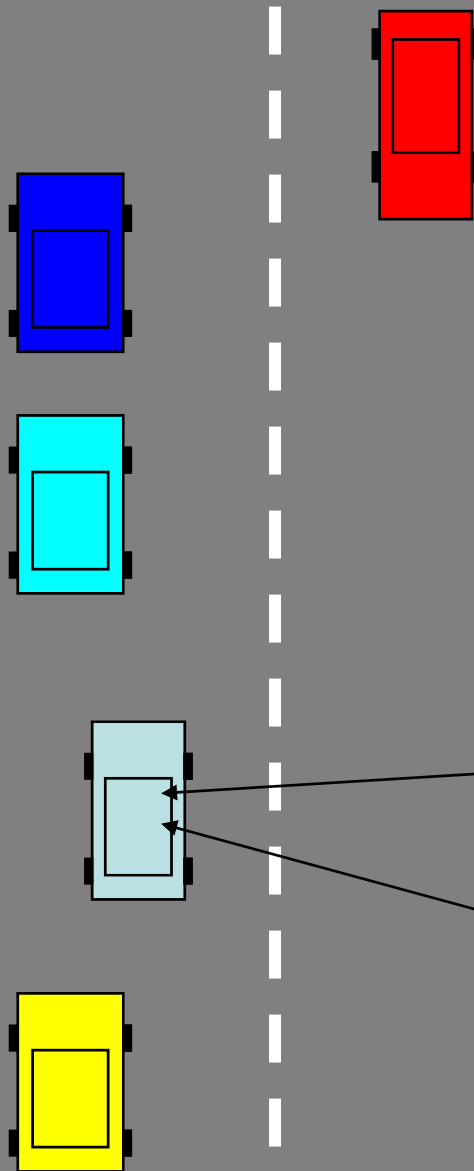
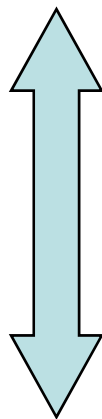


# Planning

# Positioning

# Observations

Look far down the road, plan where you need to go in advance

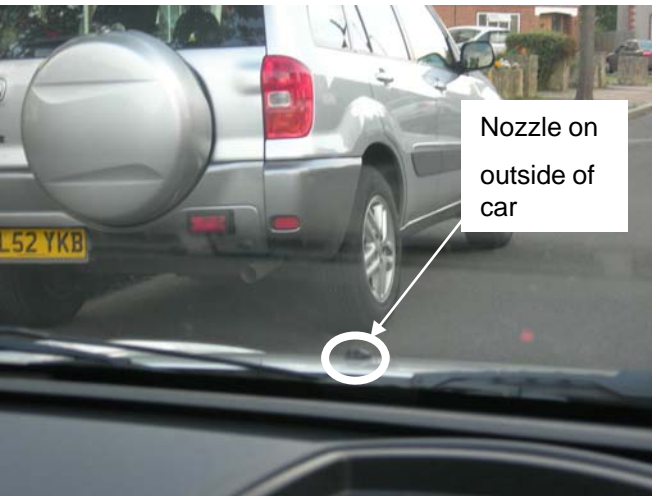


It maybe that the oncoming car will give way to you. Check to see if they are adopting the hold back position

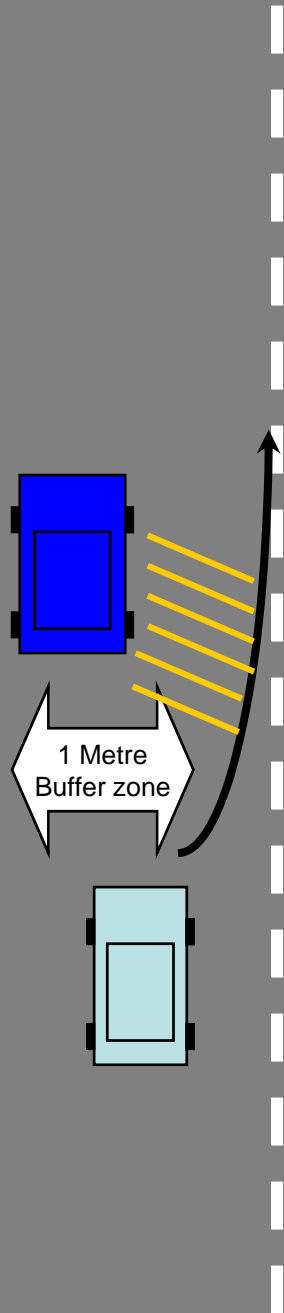
Check your centre & right mirror before moving out

Check your centre & left mirror before moving in

# Steering



# Positioning



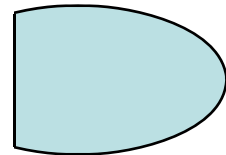
# Observations

## To move out

What's behind you?



Is anyone overtaking you?



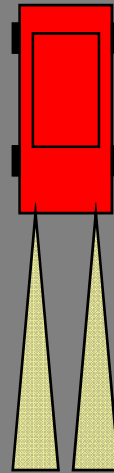
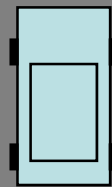
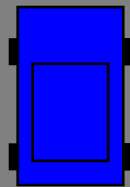
# Positioning

# Observations

They may not be flashing you?



Proceed with caution



## To move out

What's behind you?



Is anyone overtaking you?

